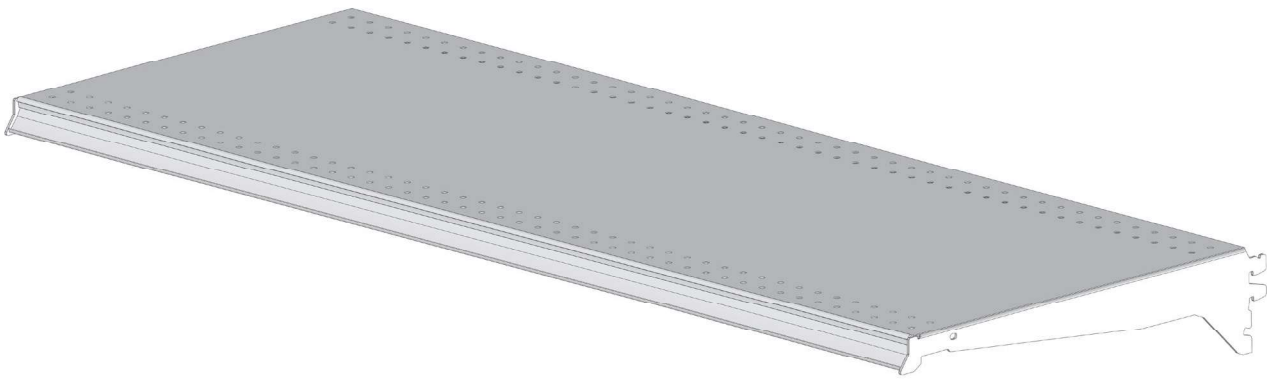
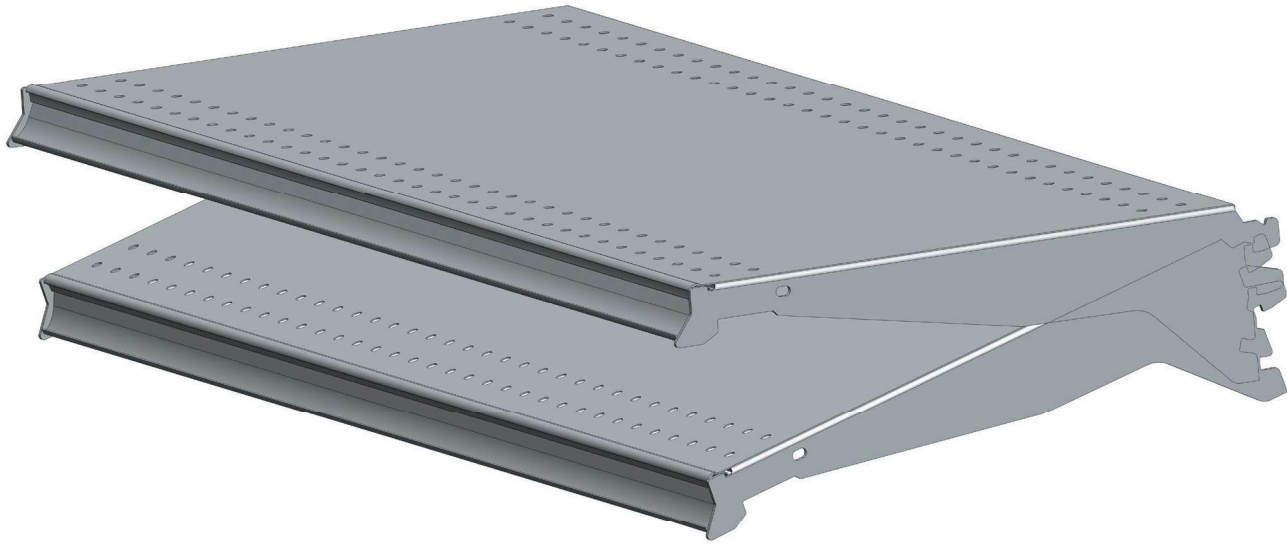


# Z LINE DROP IN MOUNT

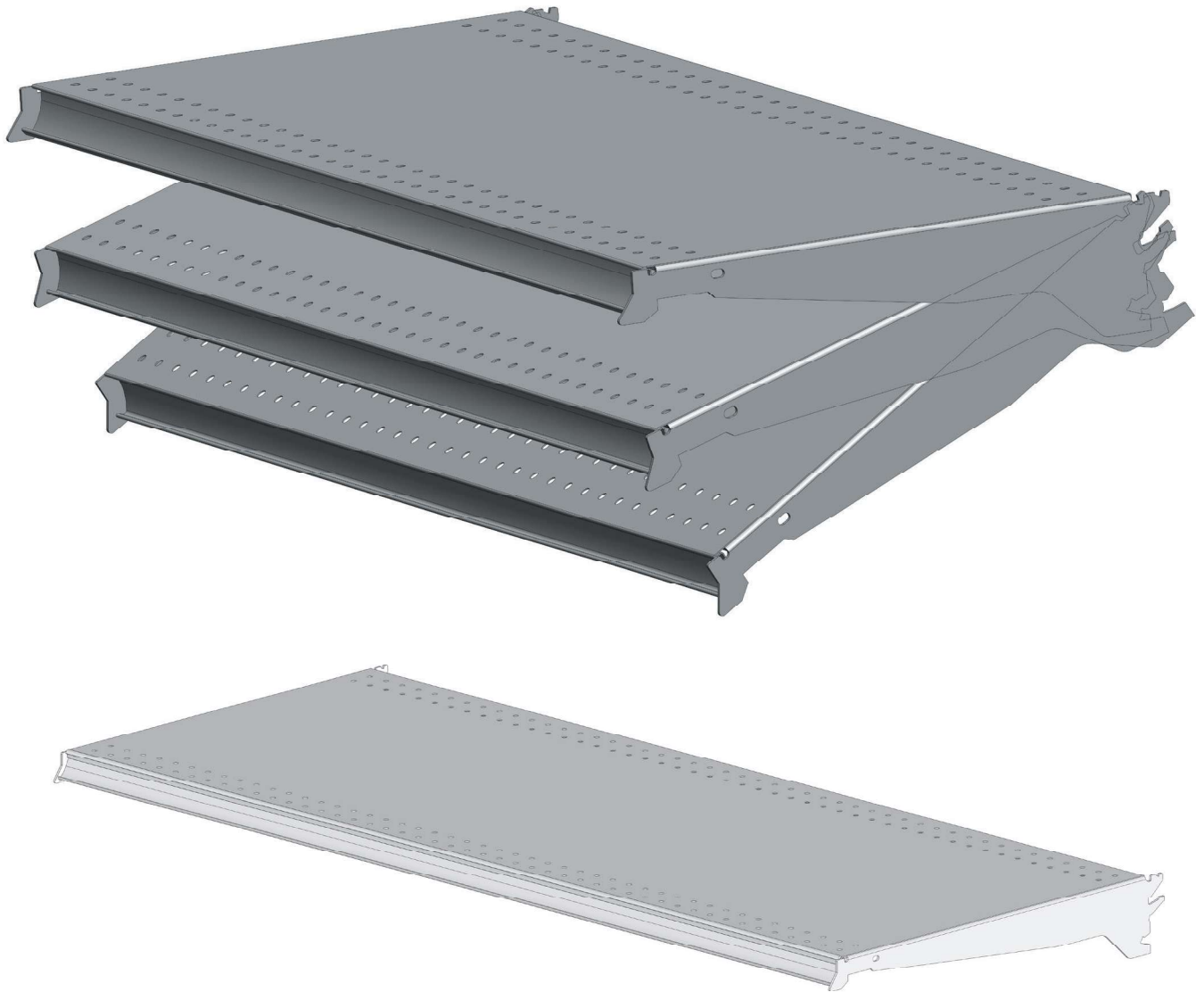


Item#	Z D I		
Prefix	Length	Depth	Option
ZDI	18"	8" - 30" in 1" Increments	D - Dieform, Grey
	24"		A - Aluminum Molding
	30"		AP - Painted Aluminum Molding
	36"		
	42"		
	48"		
	60" (two 30" sections)		

## Z LINE DROP IN MOUNT UPPER SHELVES

Straight Drop In Mount Upper Shelves feature industry leading weight capacities with straight in and out mounting capabilities an unbeatable combination. All Shelves include 1.25" die formed tag molding with full front and back perforations to accommodate a variety of merchandising accessories . Z Line Drop In Mount upper shelves 8" to 20" deep are rated at 600 lbs.; the 21" to 30" deep have reduced ratings.

# Z LINE MULTI POSITION SHELVES



Item#	<input checked="" type="checkbox"/> <input type="checkbox"/> <input type="checkbox"/> <input type="checkbox"/> <input type="checkbox"/>		
Prefix	Length	Depth	Option
ZMP	18"	8" - 30" in 1" Increments	D - Dieform, Grey
	24"		A - Aluminum Molding
	30"		AP - Painted Aluminum Molding
	36"		
	42"		
	48"		
	60" (two 30" sections)		

## Z LINE MULTI POSITION UPPER SHELVES

Multi and Single Position Upper Shelves provide merchandising flexibility while providing industry leading ratings. All Shelves include 1.25" die formed tag molding with full front and back perforations to accommodate a variety of merchandising accessories. Multi Position shelves feature the latest in "hook in" bracket design allowing 3 position flexibility: 15°, 30°, and 0° (straight). Z Line Multi Position upper Shelves 8" to 20" are rated at 400 lbs.; the 21" to 30" have reduced ratings.

# Z LINE LOAD RATING

SHELF SIZE	SHELF TYPE AND LOAD RATING	
	ZMP Multi-Position	ZDI Drop-In Mount
08	600	600
09	600	600
10	600	600
11	600	600
12	600	600
13	600	600
14	600	600
15	600	600
16	600	600
17	600	600
18	600	600
19	600	600
20	600	600
21	525	600
22	525	600
23	525	600
24	525	600
25	525	600
26	525	600
27	525	600
28	475	600
29	475	600
30	475	600

15 Degree downslope brackets rated at 200#  
 30 Degree downslope brackets rated at 100#

## Z LINE SHELF FEATURES

1. Safety factor for all shelves is a minimum of 1.67 Times rated load.
2. Shelf perforations fit current and previous designs of tension wire fencing and dividers.
3. Top surface of shelves aligns with top of upright when shelves are installed in the top slot.

## Z LINE COMPETITIVE FEATURES

1. ZMP fits lozier slotting. (Reduce load ratings by 25%)
2. ZMP fits madix slotting. (No reduction in ratings)